



**WELCOME**



**GEORGIA  
COLLEGE  
& STATE UNIVERSITY**

**MOVE-IN  
INFORMATION**

# WELCOME

to University Housing and Residence Life

In less than a month you will be moving into your new residence hall or apartment, and your college career will begin. Here's what you need to know about moving in.

Move-in will take place on  
**Thursday, August 8.**

To check in, bring your photo ID (Bobcat Card) to your assigned hall's check-in location or, for residents of The Village, the West Campus Center.



## Select a Move-In Time

An email with instructions for selecting your check-in time will be sent to your [bobcats.gcsu.edu](mailto:bobcats.gcsu.edu) email address in late July. Select from 6 time slots.



## Move-In Tips

- Remember to bring your photo ID (Bobcat Card) and loading zone pass, which is included in this mailer.
- Bringing a hand truck or cart from home will make move-in a breeze.
- Bring a plastic drop cloth or tarp to cover items in case of rain.
- You should mark all boxes and items with name, building and room number.
- Just bring the basics, then fill up the room over the next few weeks.
- Avoid overpacking boxes and totes to reduce weight. Heavier items can be difficult to carry up stairs.
- Look for the University Housing Welcome Book for information about the campus and Milledgeville.

# VENDORS

**SWAKU**

SWAK University Services



## SWAKu - Care Packages

SWAK University Services provides care packages that provide your student extra support during the sometimes stressful transition to college and help your student start their academic year off right. Check out SWAKu today!

**dorm**  
co.com



## DormCo – Room Accessories

Shop at Dormco for comforters, bedding packages, decorations and room accessories of all kinds. Mattresses in the residence halls and 8-person Village suites are twin x-long (36 inches by 80 inches) Mattresses at The Village are standard full-size.

  
**GradGuard**  
college life protected™



## GradGuard – Renters Insurance

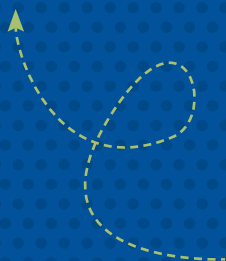
Georgia College does not assume any legal obligation to pay for injury to person or loss or damage of personal property including any personal items that are stolen or damaged. GradGuard Renters Insurance is a smart, low cost investment for college students and their families as it provides protection for personal belongings as well as financial or unintentional damage to your residence or bodily injury to others for which you could be liable.

  
**COLLEGE**  
PRODUCTS.COM



## College Products – Furniture Rentals/Purchase

Georgia College has partnered with College Products to provide even more options for students to create a home away from home. Available products include lofts, futons, mini-fridges and safes.



# MOVE-IN MAP



W. MCINTOSH ST.

N. COLUMBIA ST.

◀ To/From West Campus

ROAD CLOSED

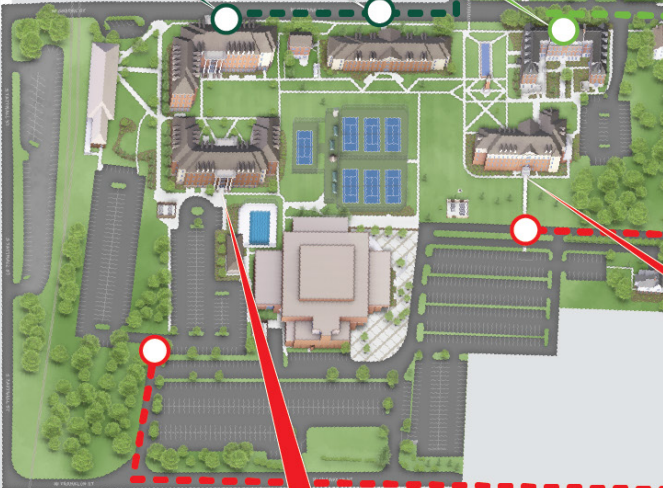
WELLS HALL

PARKHURST HALL

SANFORD HALL

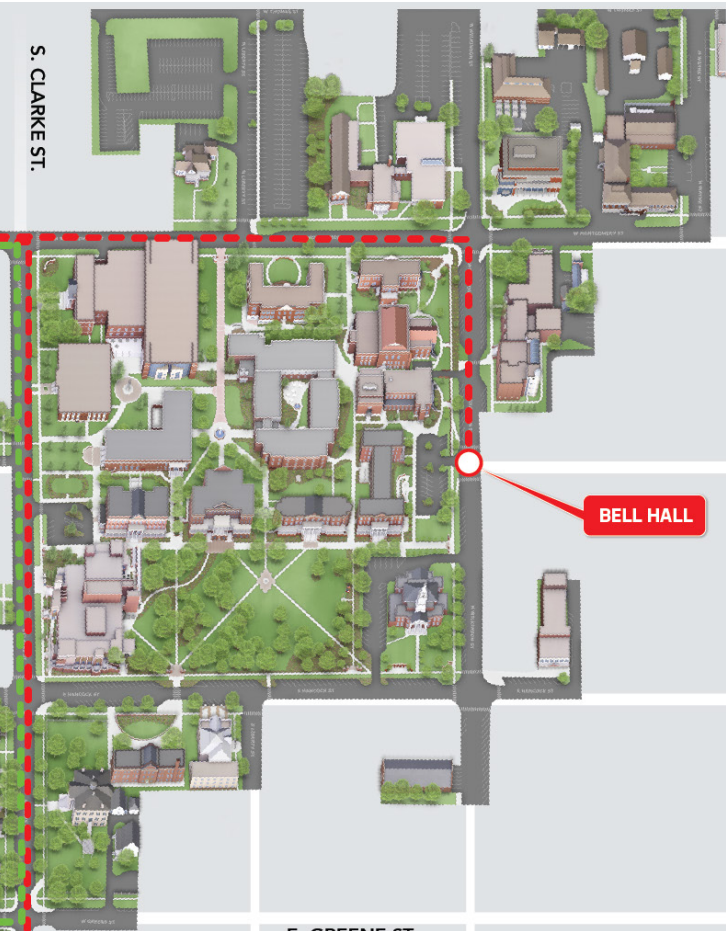
ADAMS HALL

W. HANCOCK ST.



FOUNDATION HALL

S. CLARKE ST.



**BELL HALL**

**NAPIER HALL**

**E. GREENE ST.**

**Central Campus**  
*check-in at your building*

**West Campus**  
*check-in at the West Campus Center*



**HOUSING AND  
RESIDENCE LIFE**

GEORGIA COLLEGE & STATE UNIVERSITY

S. CLARKE ST.

# WHAT TO BRING

✓	Check List
	Personal paperwork ( <i>Social Security card, copies of prescriptions and insurance</i> )
	Medications
	Pillow, sheets and comforter
	Mattress pad/cover ( <i>twin XL-long on Central Campus and 8-person suites at The Village</i> )
	Cleaning supplies
	Trash can and trash bags
	Toilet paper
	Toiletries and towels
	Plunger
	Shower curtain and rings ( <i>not provided by GC Housing</i> )
	High Efficiency (HE) laundry detergent

✓	Check List
	Clothes hangers
	Curtains and tension rods ( <i>mini-blinds are provided</i> )
	3M Command adhesive hooks
	Surge protectors
	Desk lamp
	Flashlight
	Coffee maker with internal heat device
	Dishes and utensils
	Mini-fridge
	Microwave
	HEPA Filter/Room Air Purifier
	Bike lock
	Non-adhesive drawer liners

## The Village Apartment Needs

✓	Check List
	Pots and pans
	Kitchen trash can and trash bags
	Kitchenware
	Full-size bedding
	Small appliances



You can find the dimensions to your room, sizes for furniture and floor plans to all of our halls at: [gcsu.edu/housing/floor-plans-and-dimensions](https://gcsu.edu/housing/floor-plans-and-dimensions)



# THINGS TO LEAVE HOME

✘	DO NOT BRING
✘	Alcohol
✘	Tobacco and vaping devices
✘	Illegal drugs
✘	Fireworks
✘	Weapons of any kind, including airsoft guns, are prohibited
✘	Cooking equipment with exposed heating elements ( <i>toasters, hot plates, hot plate style coffee makers, George Foreman grills, air fryers, etc.</i> )
✘	Halogen lamps
✘	Electric heaters
✘	Candles and incense
✘	Nails and screws
✘	Wall paper and contact paper
✘	Dart boards
✘	Out-of-season clothes
✘	Homemade lofts
✘	Pets, other than fish
✘	Mounting brackets ( <i>students are charged for damaged walls</i> )



Before move-in, please visit [gcsu.edu/housing/community-expectations](https://gcsu.edu/housing/community-expectations) and review the University Housing Handbook.



Campus Box 60  
Milledgeville, GA 31061

# MOVE-IN INFORMATION



FOLLOW US ON



PRESORTED  
FIRST CLASS MAIL  
U.S. POSTAGE  
PAID  
MAIL SORT  
MACON 31201